

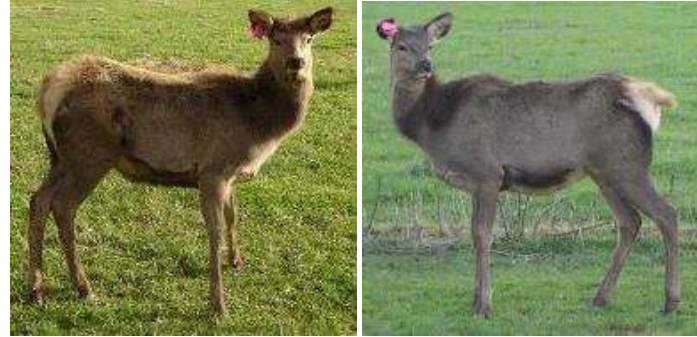
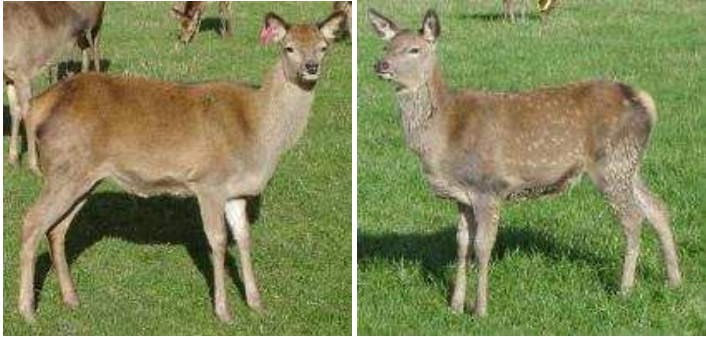
Red vs. Wapiti weaners in winter pelage

Red (Wapiti Score=1)

Wapiti (Wapiti Score=4)

Stature

Finer, shorter more proportionate body and limbs	Tall, thicker, blockier, more rectangular body Legs appear more gangly and awkward; less proportionate to body
--	--



Colour

Red and grey mostly. Grey face and underside, red body Legs same colour as underside	Chocolate-black and cream. Head and neck (throat mane) darker, body lighter brownish grey to cream or straw coloured Legs same colour as body
---	--



Rump

Smaller, less apparent rump patch, any colour from fully red to fully white often red top and white bottom. Tail different colour Shaped like an upside down pear	Large obvious creamy-white rump patch. Tail same colour as rump Heart shaped and quite rounded looking
---	--



Head

More elongated muzzle, grey face, and red to brown chevron (forehead) Pointed ears	Muzzle more stout/shorter, brown face and chevron (forehead) Rounded fuzzy ears
---	--

